

Fact Sheet: Children, Families and Early Childhood Education in Hawaii August 2007

Hawaii Demographics¹

Population of children, 0-5	87,321
Population of children, 3-4	34,258
Population of children 4-years old	17,439
Percent who are low-income (based upon free/reduced lunch)	44.6%

-An analysis of birth cohorts shows an expected upward trend over several years, from 15,310 in 1998 to 18,062 in 2004, (17,529 in 2006). This trend will likely place additional pressure upon the early childhood system.

- 61% of entering kindergarten students in 2006 attended some type of preschool.

Early Childhood Education Capacity and Enrollment²

Number of licensed preschools	393
Number of licensed infant/toddler centers	48
Number of licensed family child care homes	504
Number of licensed group homes	7
Number of children under five per every licensed child care spot	3.7

	Enrollment	Desired Capacity	% of Desired Capacity
Preschool	17,953	18,396	97.6%
Child Care Homes	2,181	2,700	80.8%
Infant/Toddler	919	944	97.4%

*Note: These figures do not include the military child care system

- Programs electing to undergo accreditation must reduce their child/staff ratios. This means that programs may be licensed to serve additional children, but elect to keep their enrollment at reduced levels. Until funding incentives are developed, or parents increase their demand for services, early childhood programs typically lack sufficient revenue to increase their capacity. Other states have developed creative strategies such as a facility loan fund to address this concern.

Center Based Workforce: Degrees³

Hawaii Careers with Young Children (HCYC) Registry data, as of February 2007, on practitioners qualified as teachers at licensed group child care (ages 2-5) centers (n=1,181). Note: this information is a snapshot in time and may not reflect the education level of teachers who have subsequently earned a higher level degree.

Child Development Associate's only (CDA)	8% of teachers
Associate's in Early Childhood Education, related major, or with CDA (ECE)	25% of teachers
Associate's in another field	3% of teachers
Bachelor's/Master's in ECE, related major, or with CDA	41% of teachers
Bachelor's/Master's in another field	13% of teachers
Others	10% of teachers

¹ U.S. Census Bureau, Resident Population Estimates for the State of Hawaii by Single Year of Age & Sex, July 1, 2006; Hawaii DOE Free/reduced lunch 2006.

² PATCH data as of June 2007.

³ DHS and PATCH Registry data, 2007 analysis by Teresa Vast & Kathie Reinhardt

Early Childhood Education Quality-NAEYC Accreditation³

Military	KS	Childcare Business Coalition	Head Start	UH System	Other
8	20	23	1	6	27
					85 Total

- Accreditation is the best available indicator of a high quality program.

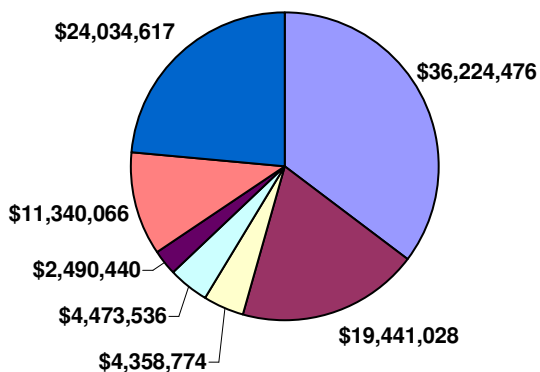
Paying for Early Childhood Education⁴

Average annual tuition of an infant in a center (age 0 to 2yrs)	\$10,320
Average annual tuition of a preschool program (ages 2 through 5)	\$6,670

Government and Private Spending on Early Childhood Education and Care⁵

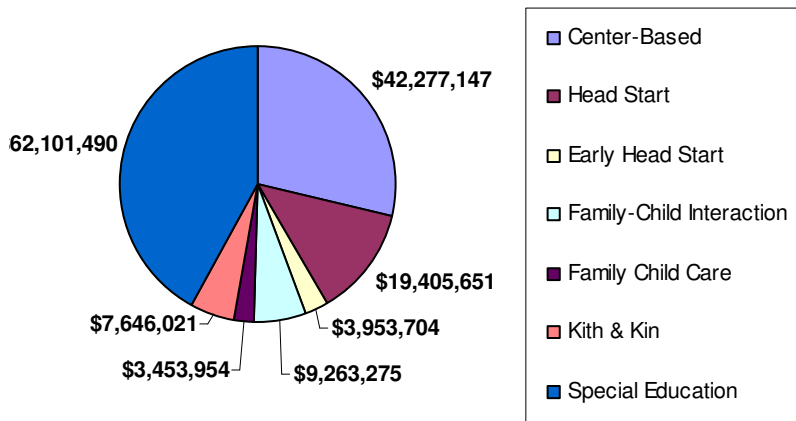
- Percent of public spending that is federal 38%

Year 2003



**Hawaii's
Early
Childhood
Spending in
2003 and 2006**

Year 2006



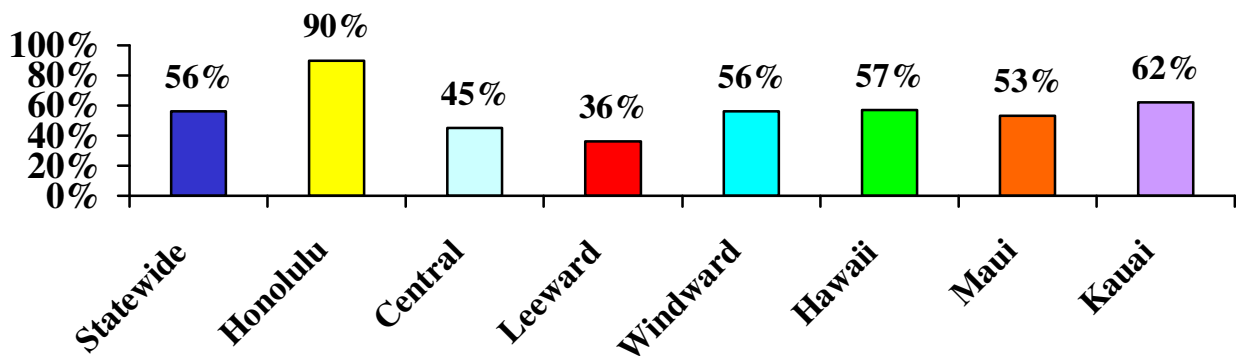
³ NAEYC data from website, August 1, 2007

⁴ PATCH data as of June 2007, averages calculated by Kathie Reinhardt.

⁵ Kathie Reinhardt funding analyses for Good Beginnings Alliance, 2007

Capacity of preschools: The total desired capacity⁶ for Department of Human Services (DHS) licensed and military centers for preschool-age children in fall 2006 was 19,600. If half of the available spaces were filled by 4-year-olds, approximately 56% of all 4-year-old children could be accommodated.⁷ Available spaces vary greatly by location – for example, in Honolulu spaces are estimated to accommodate 90% of all 4-year-old children, but in Leeward Oahu, the estimated spaces will serve only 36% of all children.

**Estimated % of All 4-Year-Olds That Could Be Served Given
Current Center Capacity
Fall 2006 - by School District**



⁶ “Desired capacity” is the number of children a program chooses to enroll during the school year. This number may be lower than the licensed capacity but more accurately reflects the number of currently available spaces. Some factors that affect desired capacity may be the accreditation status of a program (e.g., smaller group sizes and higher teacher-child ratios), the availability of qualified teaching staff, and the availability of other program resources.

⁷ Since the actual mix of children in different age groups (2s, 3s, and 4s) in preschool programs is unknown, it is necessary to assume a percentage of spaces available for 4-year-olds for this estimate. It should be noted, however, that if half of all spaces were reserved for 4-year-olds, this would displace children of other ages (0-3 years) that are currently served by centers.

Average Wages of Preschool and Kindergarten Teachers: According to the May 2006 State Occupational Employment and Wage Estimates from the Bureau of Labor Statistics, the average salaries for preschool and kindergarten teachers (both do not include special education teachers) were:

Preschool: \$26,300
Kindergarten: \$34,910

